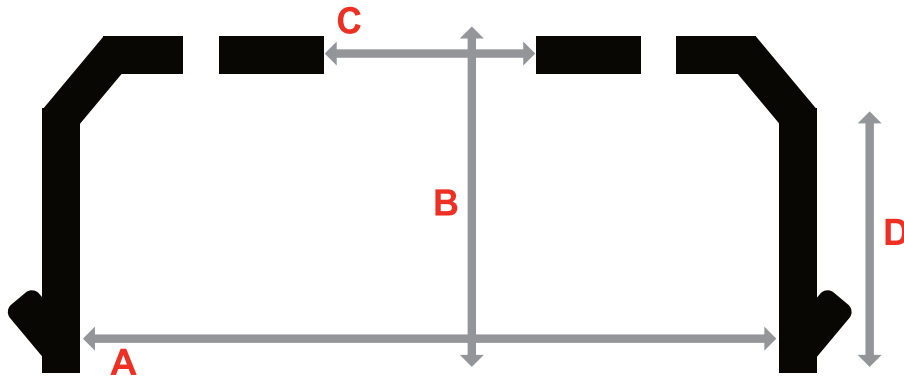


Measuring Guide:

Brake Drum Replacement Required Measurements:

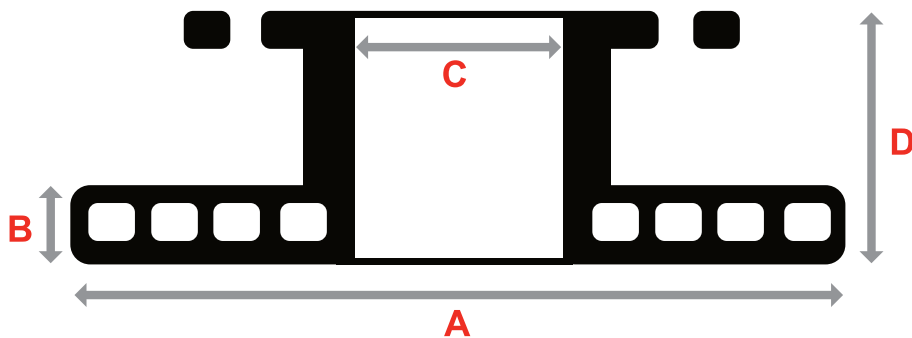


For an accurate replacement of the brake drum, it's essential to take precise measurements:

Start by measuring the overall height of the brake drum from the top to the bottom (denoted as line B).

Next, measure the internal width of the drum (indicated as line A). Finally, count the number of stud holes. These measurements will help us ensure that you select the correct part for your vehicle.

Brake Disc Replacement Required Measurements:



To find the right brake disc, start by measuring its overall height from top to bottom (labeled as line D) and its width (labeled as line A).

Also, don't forget to count the number of stud holes. These details are important for selecting the correct replacement part for your vehicle.